

EXPERIENCE COMBINED
WITH TECHNOLOGY

NEW
GENERATION



JW CONTROL CO.
Valve & Plant Equipment, Service

JW CONTROL COMPANY INTRODUCTION

Message

Welcome to JW CONTROL Co.

JWC is a well-known Industrial Valve equipment manufacturer in world market as well as domestic market. JWC is becoming high quality producer with respected reputation from our customers. In order to ensure customers satisfaction, we are doing our best with innovative marketing, high technology and quality control.

JWC is more responsible to your needs than “the other competitors” and customer-focused. We offer quicker delivery that you would expect, responsive customer service, and a 100% process guarantee.

JWC is an industrial butterfly valve and ball valve and we design and manufacture all valves according to customer's specifications

JWC is

first! Think customer first,

second! Quality is our top priority,

third! It is a company that thinks about product performance.

Thanks.

History

- 2016. 12 JW CONTROL was established.
- 2017. 01 Aquired ISO 9001
- 2017. 01 Registered to KSB AMRI
- 2017. 01 Registered to FESTO LTD.
- 2017. 03 Supplied GATE 2000A to POSCO #2 BFG GAS PJT
- 2017. 06 Registered to POSCO Ltd and supplied to BFV for POWER GAS
- 2017. 06 Registered to HHI SCR's 2nd supplier

Clients (Purchaser & End Users)



FESTO

POSCO

HYUNDAI
HEAVY INDUSTRIES

Certification & Patent



Content

	Page
■ MODEL No. CODING CHART	4
■ JWC DISC & SEAT DESIGN	5~7
■ HIGH/PRE. CONCENTRIC BUTTERFLY VALVE	8
■ CONCENTRIC BUTTERFLY VALVE	9 ~ 11
■ DOUBLE ECC / TRIPLE ECC BUTTERFLY VALVE	12 ~ 17
■ ACID PROOF BUTTERFLY VALVE	18 ~ 19
■ BALL VALVE	20 ~ 23
■ ASSEMBLY & PRODUCTS	26 ~ 27

MODEL No. CODING CHART

VALVE TYPE	VALVE DESIGN	FLANGE TYPE	FLANGE RATINGE	SIZE	MATERIAL				OPERTOR	OPTION
					BODY	DISC	SEAT	SHAFT		
BF	T	FL	J2	0150	CA	SA	TR	SG	PC	HT - FS

VALVE TYPE		DESIGN		FLANGE TYPE		FLANGE RATINGE		SIZE	
BUTTERFLY	BF	CONCENTRIC	C	WAFER	WA	CL.150	A1	2"	0050
BFY. TILTING	BT	SINGLE OFFSET	A	LUG	LU	CL.300	A2	2 1/2"	0065
NON SLAM	NS	DOUBLE OFFSET	H	FLANGE	FL	CL.600	A3	3"	0080
NON RETURN	NR	HI-PERFORMANCE		RING JOINT	RJ	CL.900	A4	4"	0100
DAMPER	DM	TRIPLE OFFSET	T	BUTT ENDS	BT	CL.1500	A5	5"	0125
				TUMG & GROOVE	TG	CL.2500	A6	6"	0150
				SPECIAL	SP	5K	J1	8"	0200
						10K	J2	10"	0250
BALL	BA	TRUNION	T			16K	J3	12"	0300
		FLOATING	F			20K	J4	14"	0350
						30K	J5	16"	0400
						40K	J6	18"	0450
GATE	GT	WEDGE	W			6bar(PN6)	B1	20"	0500
		PARALLEL	P			10bar(PN10)	B2	22"	0550
GLOBE	GL	KNIFE	K			16bar(PN16)	B3	24"	0600
						20bar(PN20)	B4	26"	0650
						40bar(PN40)	B5	28"	0700
CHECK	CH	SINGLE PLATE	P			CL.B	AB	30"	0750
		DUAL PLATE	D			CL.D	AD	32"	0800
		SWING	S			CL.E	AE		
						CL.F	AF		
						SPECIAL	SP	60"	1500
								SPECIAL	SP

BODY MATERIAL	
CARBON STEEL	CA
CARBON PLATE(SS400 / A36)	CP
LOW TEMPERATURE CARBON STEEL	LC
LOW ALLOY STEEL	LA
304 STAINLESS STEEL	SA
304L STAINLESS STEEL	SB
316 STAINLESS STEEL	SC
316L STAINLESS STEEL	SD
INCONEL	IN
MONEL	MO
DUPLEX	DU
TITANIUM	TI
BRONZ	BR
AL-BRONZ	AB
NI-AL-BRONZ	NB

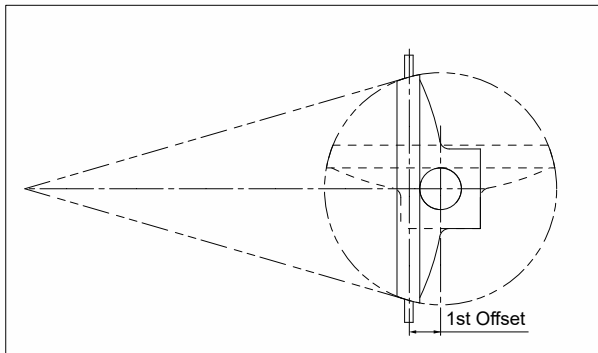
DISC MATERIAL	
CARBON STEEL	CA
CARBON PLATE(SS400 / A36)	CP
LOW TEMPERATURE CARBON STEEL	LC
LOW ALLOY STEEL	LA
304 STAINLESS STEEL	SA
304L STAINLESS STEEL	SB
316 STAINLESS STEEL	SC
316L STAINLESS STEEL	SD
630 STAINLESS STEEL	SG
INCONEL	IN
MONEL	MO
DUPLEX	DU
TITANIUM	TI
BRONZ	BR
AL-BRONZ	AB
NI-AL-BRONZ	NB

SEAT MATERIAL	
NONE	NO
PTFE	PT
RTFE	RT
PCTFE	PC
DEVLON	DE
NBR	NR
EPDM	EP
SILICON	SI
VITON	VI
SRAINLESS STEEL	SS
INCONEL	IN
MONEL	MO
DUPLEX	DU
TITANIUM	TI
BRONZ	BR
AL-BRONZ	AB
NI-AL-BRONZ	NB

SHAFT MATERIAL	
304 STAINLESS STEEL	SA
304L STAINLESS STEEL	SB
316 STAINLESS STEEL	SC
316L STAINLESS STEEL	SD
310 STAINLESS STEEL	SE
410 STAINLESS STEEL	SF
360 STAINLESS STEEL	SG
INCONEL	IN
MONEL	MO
DUPLEX	DU
TITANIUM	TI
BRONZ	BR
AL-BRONZ	AB
NI-AL-BRONZ	NB

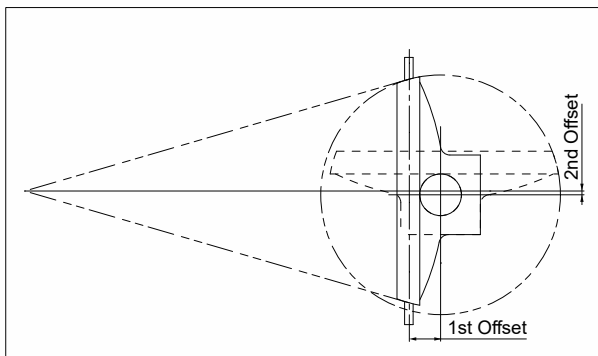
OPERATOR	
NONE	NO
BARE SHAFT	BS
LEVER HANDEL	LE
GEAR	GE
MOTOR	MO
PNE. CYL	PC
HYD. CYL	HC
DASH PORT	DP

OPTION	
NONE	NO
HIGH TEMP	HT
LOW TEMP	LT
LINED	LI
COATING	CO
FIRE SAFETY	FS
HARD FACING	HF
SPECIAL	SP



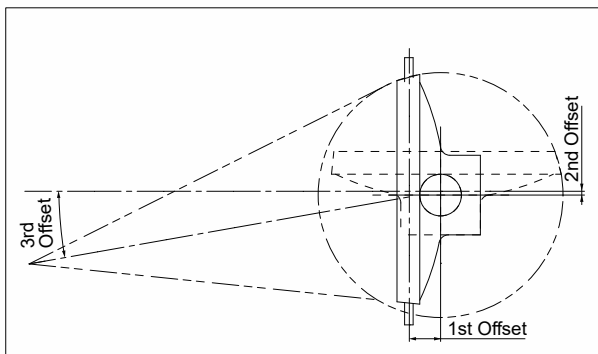
■ **ECCENTRIC DESIGN**

-The ECCENTRIC Type Valve is a design with a changed sealing position.
 The clearance between the shaft center of the body and the sealing center makes the sealing better when subjected to positive pressure.
 -It is widely used for rubber lining valve.



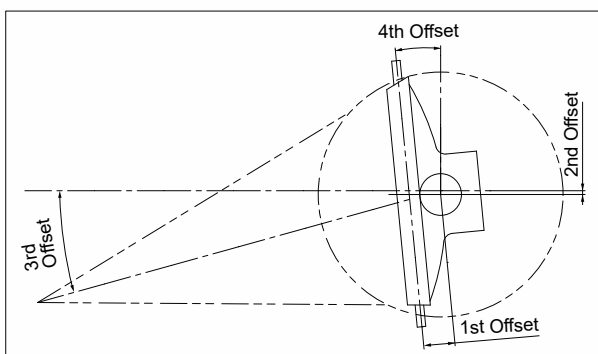
■ **DOUBLE ECCENTRIC DESIGN**

-The double eccentric type valve eccentrically centers on the center of the eccentric type valve body to reduce the area of the friction sheet when the disk is opened and closed.
 -It is widely used in rubber sheet and Teflon sheet.



■ **TRIPLE ECCENTRIC DESIGN**

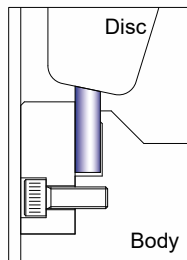
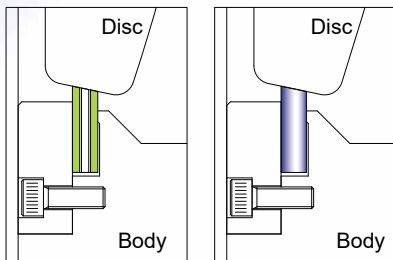
-The triple eccentric type valve has a double eccentric type valve with a machining angle, which reduces the area of the friction sheet when the disc is opened and closed.
 -It is widely used in metal sheet.



■ **TILTING TYPE TRIPLE ECCENTRIC DESIGN**

-The tilting triple-eccentric valve tilts the sealing center of the triple-eccentric valve to reduce the area of the sheet that rubs when the disc is opened and closed. Structure to match the characteristics of the check valve.
 -It is widely used in metal sheet.

DOUBLE ECC./TRIPLE ECC. BUTTERFLY VALVE SEAT DESIGN



■ BODY SEAT TYPE

METAL SEAT(LIMITED, SOLID DESIGN)

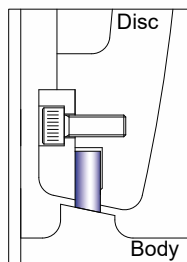
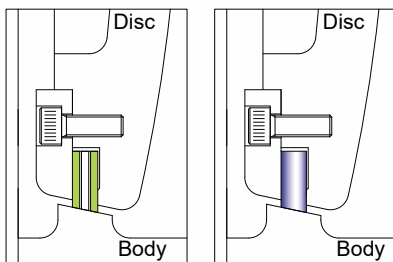
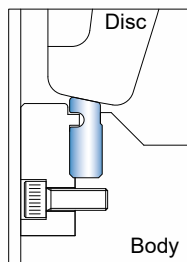
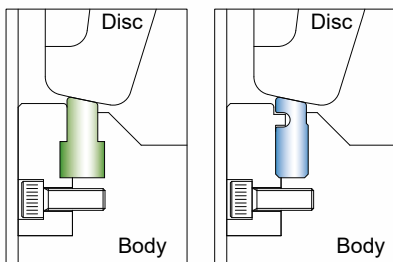
- STAINLESS STEEL, DUPLEX, INCONEL, MONEL, ETC.

RUBBER SEAT

- NBR, EPDM, VITON, SILICON, ETC.

TEFLON SEAT

- PTFE, RTFE, PCTFE, ETC.



■ DISC SEAT TYPE

METAL SEAT(LIMITED, SOLID DESIGN)

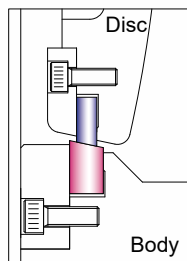
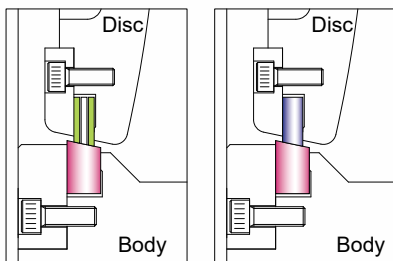
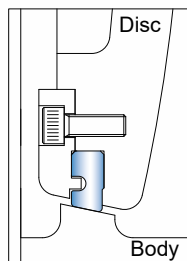
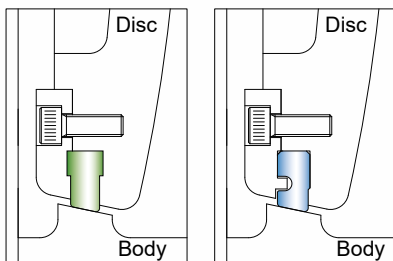
- STAINLESS STEEL, DUPLEX, INCONEL, MONEL, ETC.

RUBBER SEAT

- NBR, EPDM, VITON, SILICON, ETC.

TEFLON SEAT

- PTFE, RTFE, PCTFE, ETC.



■ BODY + DISC SEAT TYPE

METAL SEAT(LIMITED, SOLID DESIGN)

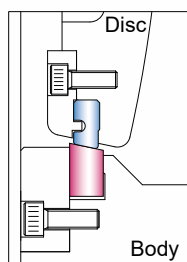
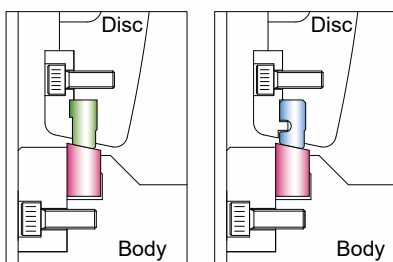
- STAINLESS STEEL, DUPLEX, INCONEL, MONEL, ETC.

RUBBER SEAT

- NBR, EPDM, VITON, SILICON, ETC.

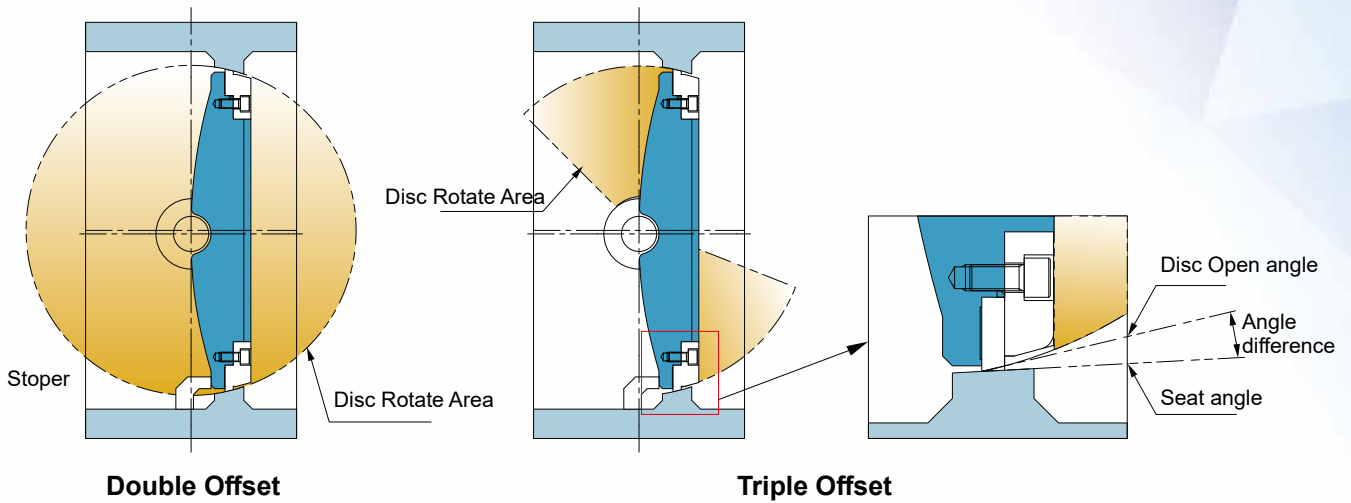
TEFLON SEAT

- PTFE, RTFE, PCTFE, ETC.



■ COMPARISON TRIPLE OFFSET BUTTERFLY BETWEEN DOUBLE OFFSET OF DESIGN

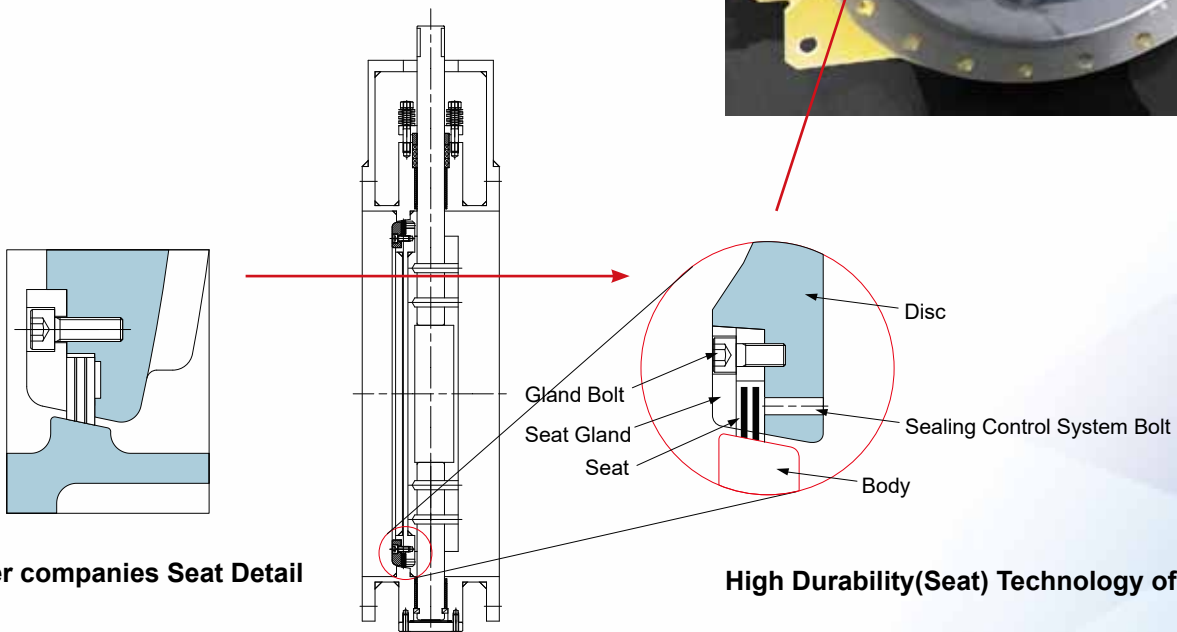
■ COMPARISON TRIPLE OFFSET BUTTERFLY BETWEEN DOUBLE OFFSET OF DESIGN



■ SEALING CONTROL SYSTEM BOLT VALVE



JWC Seat Type



Other companies Seat Detail

High Durability(Seat) Technology of JWC

■ HIGH PRESSURE CONCENTRIC BUTTERFLY VALVE

■ Main Feature

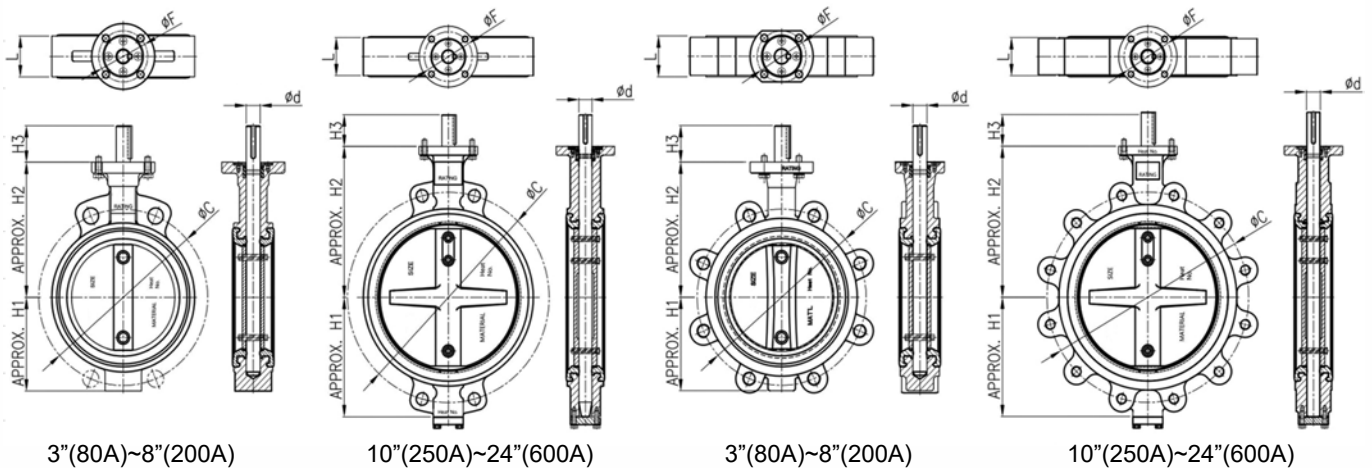
UL Listed Concentric Butterfly valve at pressure 18bar.g
 Max. allowable Pressure 740psig (51barg) withstands equivalent pressure like Double Eccentric Butterfly Valve.
 Integral design of bonded rubber seat with body enables robust endurance and long operating life.

Lighter weight of the valve makes it easy to handle and install at site compare to other types of Valve.

Face to Face Dimension : API 609 Category A for class JIS 20k/ANSI150LB

Vertical & Horizontal installation

Range		Application
Size		3"(DN80)~24"(DN600)
Fluid		Water,Oil
Rating		JIS20K/ANSI150LB
End Connection		Wafer / Lug
Temp. Range		EPDM -20~120°C
		NBR -20~80°C
		VITON -20~165°C
Materials	Body	Ductile/Caststeel
	Disc	Stainless Steel/Duplex/Albrnze
	Seat	Rubber



■ Dimension

Size (ød)		L Wafer / Lug	Distance			Valve Flange	
mm	inch		H1	H2	H3	ød	øF
80	3	46	78	150	46	16	F07
100	4	52	93	163	46	16	F7
150	6	56	128	185	46	20	F07
200	8	60	155	230	72	22	F10
250	10	68	222	257	72	25	F10
300	12	78	259	300	72	28	F10
350	14	78	298	338	72	32	F10
400	16	102	305	370	90	35	F14
450	18	114	358	390	90	40	F14
500	20	127	396	450	100	45	F16
550	22	154	430	480	100	50	F16
600	24	154	457	505	100	55	F16

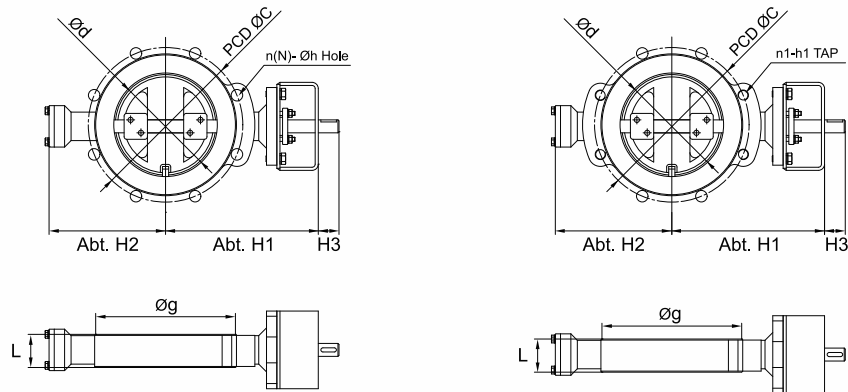
■ CONCENTRIC BUTTERFLY VALVE INNER STRUCTURE



■ Standard Material Specification

No	Part Name	Material
1	Body	A216 WCB / A351 CF8(M) / A395 / A536 / B148 C95800
2	Disc	A216 WCB / A351 CF8(M) / A395 / A536 / B148 C95800
3	Shaft	A276 Gr.304(316) / A536 Gr.630 / A479 Gr.410 / B150 C63000
4	Seat	NBR / EPDM / VITON
5	V-Packing	NBR / EPDM / VITON
6	O-Ring Bush	NYLON
7	Shaft Ring	S.S+Cr
8	End Cover	A216 WCB / A351 CF8(M) / A395 / A536 / B148 C95800
9	Pin	A216 WCB / A351 CF8(M) / A395 / A536 / B148 C95800

CALSS 150 DRILLING CONCENTRIC BUTTERFLY VALVE DIMENTION



WAFER DESIGN

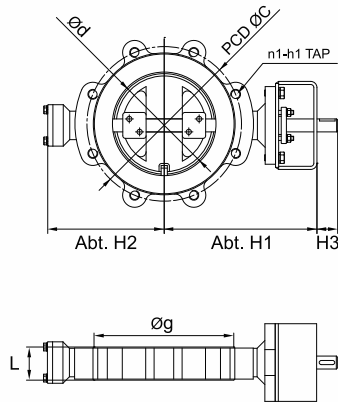
Dimension

Size (ød)		Valve Flange							
mm	inch	øD	øg	PCD øC	N	øh Hole	h1 Tap	T	f
80	3	190	127.0	152.4	4	3/4	5/8*11UNC	22.3	2
100	4	230	157.2	190.5	8	3/4	5/8*11UNC	22.3	2
150	6	280	215.9	241.3	8	7/8	3/4*10UNC	25.4	2
200	8	345	269.9	298.5	8	7/8	3/4*10UNC	28.6	2
250	10	405	323.8	362.0	12	1	7/8*9UNC	30.2	2
300	12	485	381.0	431.8	12	1	7/8*9UNC	31.8	2
350	14	535	412.8	476.3	12	1 1/8	1*8UNC	35.0	2
400	16	595	469.9	539.8	16	1 1/8	1*8UNC	36.6	2
450	18	635	533.4	577.9	16	1 1/4	1 1/8*8UNC	39.7	2
500	20	700	584.2	635.0	20	1 1/4	1 1/8*8UNC	42.9	2
600	24	815	692.2	749.3	20	1 3/8	1 1/4*8UNC	47.7	2
650	26	870	749	806.4	24	1 3/8	1 1/4*8UNC	66.7	2
700	28	925	800	863.6	28	1 3/8	1 1/4*8UNC	69.9	2
750	30	985	857	914.4	28	1 3/8	1 1/4*8UNC	73.1	2
800	32	1060	914	977.9	28	1 5/8	1 1/2*8UNC	79.4	2
900	36	1170	1022	1085.8	32	1 5/8	1 1/2*8UNC	88.9	2
950	38	1240	1073	1149.4	32	1 5/8	1 1/2*8UNC	85.8	2
1000	40	1290	1124	1200.2	36	1 5/8	1 1/2*8UNC	88.9	2
1050	42	1345	1194	1257.3	36	1 5/8	1 1/2*8UNC	95.3	2
1200	48	1510	1359	1422.4	44	1 5/8	1 1/2*8UNC	106.4	2

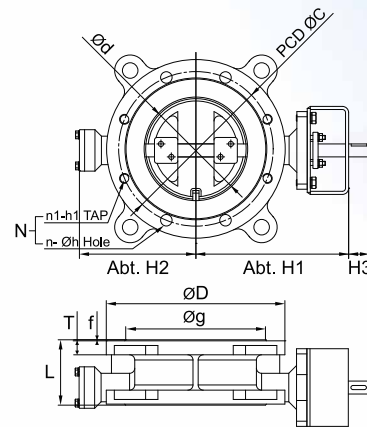
Feature

*. FLANGE RATING - ACCORDING TO ASME B16.5 / ASME B16.47 SER'A,B / JIS / USER SPEC. / ETC.
 *. FOR "H3" DIMENSION(ACTUTOR) GEAR BOX / CYLINDER / MOTOR / ETC.
 CAN BE APPLIED. PLEASE CONTACT US.

CALSS 150 DRILLING CONCENTRIC BUTTERFLY VALVE DIMENTION



FULL LUG DESIGN



DOUBLE FLANGE DESIGN

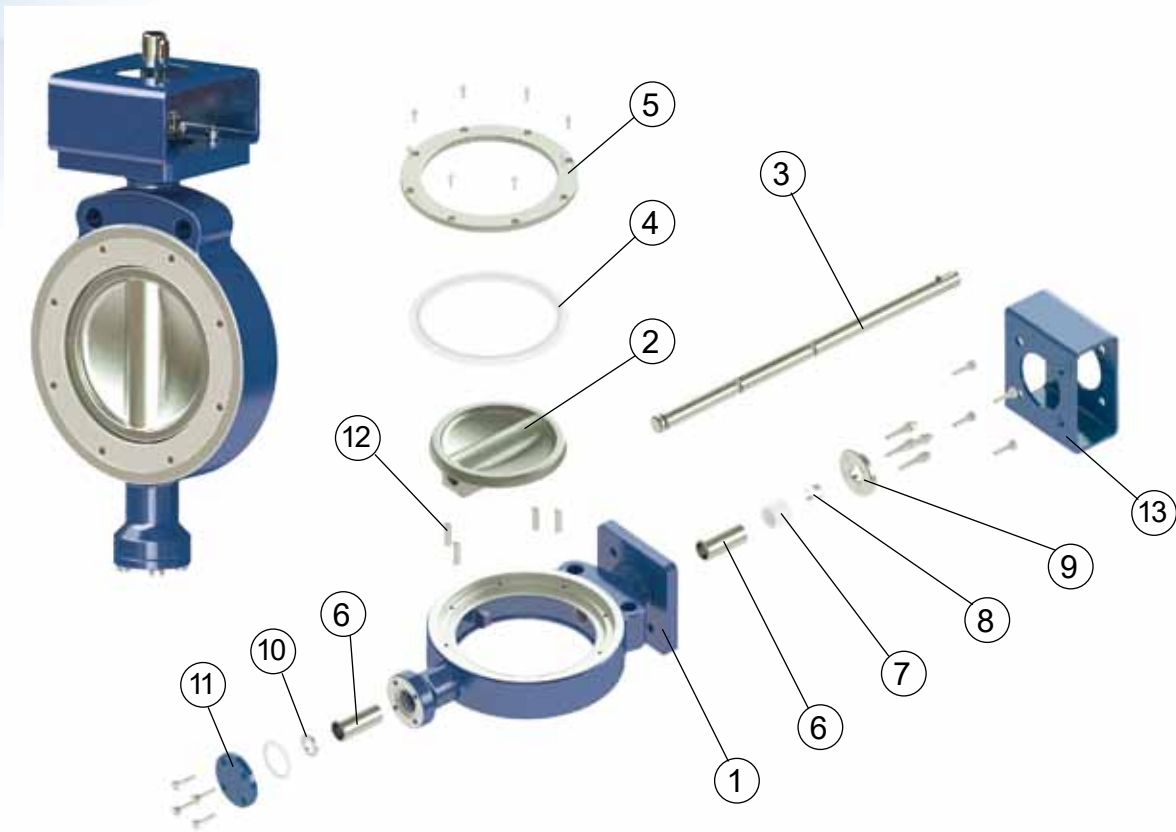
Dimension

Face to Face (L)			Distance		Abt. Weight (kg)			Size (ϕd)	
Wafer	Lug	Flange	Abt.H1	Abt.H2	Wafer	Lug	Flange	inch	mm
46	46	46	150	80	4	5	8	3	80
52	52	52	180	100	6	8	11	4	100
56	56	56	200	125	9	12	17	6	150
60	60	60	235	170	14	17	30	8	200
68	68	68	265	230	21	30	38	10	250
78	78	78	300	245	26	42	55	12	300
78	78	78	335	275	39	54	62	14	350
102	102	102	380	310	59	94	85	16	400
114	114	114	400	320	78	120	114	18	450
127	127	127	440	360	127	164	135	20	500
154	154	154	500	415	311	272	242	24	600
165	165	165	535	450	255	305	260	26	650
165	165	165	580	530	300	375	341	28	700
190	190	190	605	570	335	445	403	30	750
190	190	190	645	610	470	520	520	32	800
203	203	203	700	635	620	687	700	36	900
216	216	216	735	665	670	745	760	38	950
216	216	216	770	710	740	821	840	40	1000
251	251	251	810	750	850	970	990	42	1050
276	276	276	900	830	1050	1165	1180	48	1200

Feature

*. FLANGE RATING - ACCORDING TO ASME B16.5 / ASME B16.47 SER'A,B / JIS / USER SPEC. / ETC.
 *. FOR "H3" DIMENSION(ACTUTOR) GEAR BOX / CYLINDER / MOTOR / ETC.
 CAN BE APPLIED. PLEASE CONTACT US.

DOUBLE ECC./TRIPLE ECC. BUTTERFLY VALVE INNER STRUCTURE



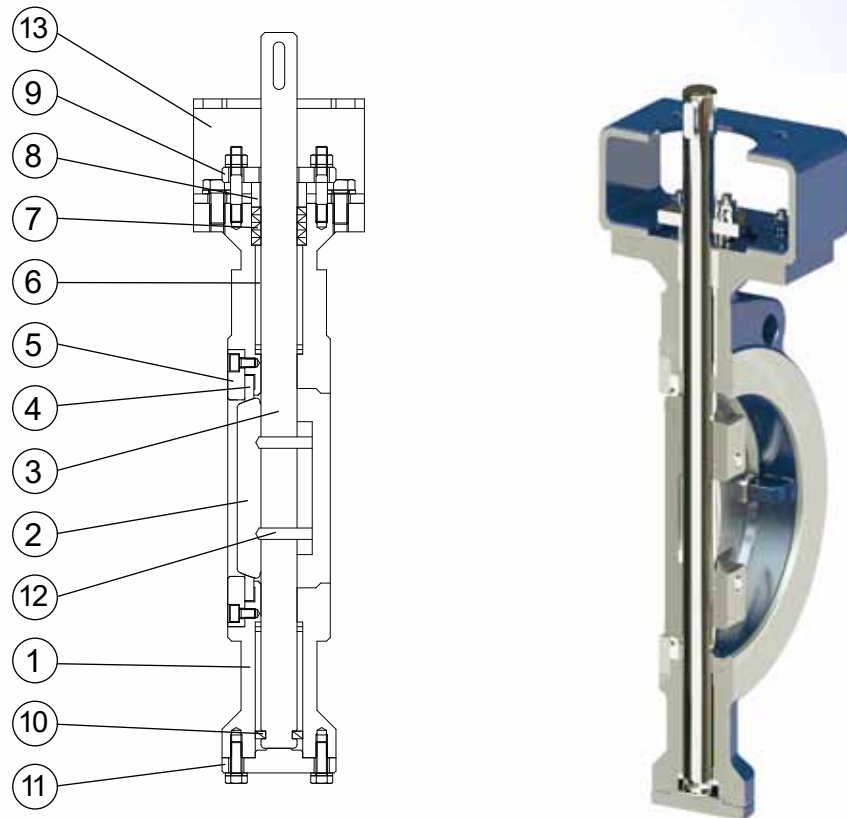
Standard Material Specification

No	Part Name	Material
1	Body	A216 WCB / A351 CF8(M) / A395 / A536 / B148 C95800
2	Disc	A216 WCB / A351 CF8(M) / A395 / A536 / B148 C95800
3	Shaft	A276 Gr.304(316) / A536 Gr.630 / A479 Gr.410 / B150 C63000
4	Seat	RUBBER / TEFLON / METAL(S.S304, S.S316, DUPLX, INCONEL)
5	Seat Retainer	A216 WCB / A351 CF8(M) / A395 / A536 / B148 C95800
6	Body Bush	S.S+PTFE / S.S+Cr.
7	Packing	RUBBER / TEFLON / GRAPHITE
8	Packing Bush	S.S304
9	Gland	S.S304
10	Shaft Ring	S.S+Cr.
11	End Cover	A216 WCB / A351 CF8(M) / A395 / A536 / B148 C95800
12	Pin	A276 Gr.304(316) / A536 Gr.630 / A479 Gr.410 / B150 C63000
13	Bracket	C.S / Steel

NOTE 1. Other materials are available, please contact us.

NOTE 2. Design and materials can be changed, please contact us.

DOUBLE ECC./TRIPLE ECC. BUTTERFLY VALVE INNER STRUCTURE



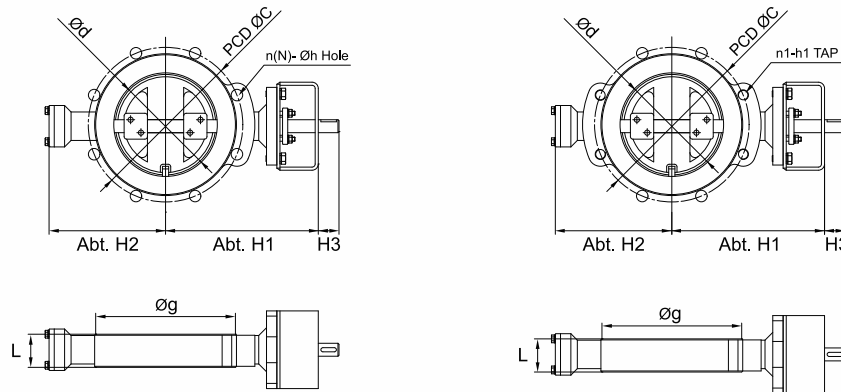
Standard Material Specification

No	Part Name	Material
1	Body	A216 WCB / A351 CF8(M) / A395 / A536 / B148 C95800
2	Disc	A216 WCB / A351 CF8(M) / A395 / A536 / B148 C95800
3	Shaft	A276 Gr.304(316) / A536 Gr.630 / A479 Gr.410 / B150 C63000
4	Seat	RUBBER / TEFLON / METAL(S.S304, S.S316, DUPLX, INCONEL)
5	Seat Retainer	A216 WCB / A351 CF8(M) / A395 / A536 / B148 C95800
6	Body Bush	S.S+PTFE / S.S+Cr.
7	Packing	RUBBER / TEFLON / GRAPHITE
8	Packing Bush	S.S304
9	Gland	S.S304
10	Shaft Ring	S.S+Cr.
11	End Cover	A216 WCB / A351 CF8(M) / A395 / A536 / B148 C95800
12	Pin	A276 Gr.304(316) / A536 Gr.630 / A479 Gr.410 / B150 C63000
13	Bracket	C.S / Steel

NOTE 1. Other materials are available, please contact us.

NOTE 2. Design and materials can be changed, please contact us.

CLASS 150 DOUBLE ECC./TRIPLE ECC. BUTTERFLY VALVE DIMENTION



WAFER DESIGN

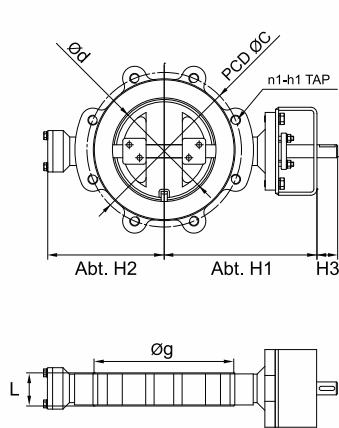
Dimension

Size (∅d)		Valve Flange							
mm	inch	∅D	∅g	PCD ∅C	N	∅h Hole	h1 Tap	T	f
80	3	190	127.0	152.4	4	3/4	5/8*11UNC	22.3	2
100	4	230	157.2	190.5	8	3/4	5/8*11UNC	22.3	2
150	6	280	215.9	241.3	8	7/8	3/4*10UNC	25.4	2
200	8	345	269.9	298.5	8	7/8	3/4*10UNC	28.6	2
250	10	405	323.8	362.0	12	1	7/8*9UNC	30.2	2
300	12	485	381.0	431.8	12	1	7/8*9UNC	31.8	2
350	14	535	412.8	476.3	12	1 1/8	1*8UNC	35.0	2
400	16	595	469.9	539.8	16	1 1/8	1*8UNC	36.6	2
450	18	635	533.4	577.9	16	1 1/4	1 1/8*8UNC	39.7	2
500	20	700	584.2	635.0	20	1 1/4	1 1/8*8UNC	42.9	2
600	24	815	692.2	749.3	20	1 3/8	1 1/4*8UNC	47.7	2
650	26	870	749	806.4	24	1 3/8	1 1/4*8UNC	66.7	2
700	28	925	800	863.6	28	1 3/8	1 1/4*8UNC	69.9	2
750	30	985	857	914.4	28	1 3/8	1 1/4*8UNC	73.1	2
800	32	1060	914	977.9	28	1 5/8	1 1/2*8UNC	79.4	2
900	36	1170	1022	1085.8	32	1 5/8	1 1/2*8UNC	88.9	2
950	38	1240	1073	1149.4	32	1 5/8	1 1/2*8UNC	85.8	2
1000	40	1290	1124	1200.2	36	1 5/8	1 1/2*8UNC	88.9	2
1050	42	1345	1194	1257.3	36	1 5/8	1 1/2*8UNC	95.3	2
1200	48	1510	1359	1422.4	44	1 5/8	1 1/2*8UNC	106.4	2

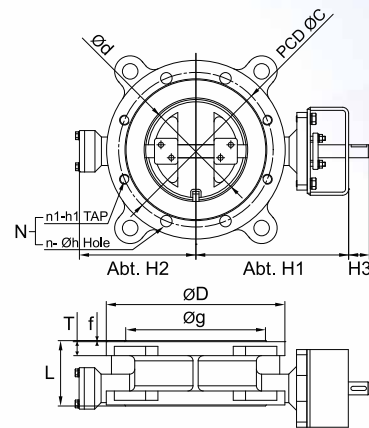
Feature

* FLANGE RATING - ACCORDING TO ASME B16.5 / ASME B16.47 SER'A,B / JIS / USER SPEC. / ETC.
 * FOR "H3" DIMENSION(ACTUTOR) GEAR BOX / CYLINDER / MOTOR / ETC.
 CAN BE APPLIED. PLEASE CONTACT US.

CLASS 150 DOUBLE ECC./TRIPLE ECC. BUTTERFLY VALVE DIMENTION



FULL LUG DESIGN



DOUBLE FLANGE DESIGN

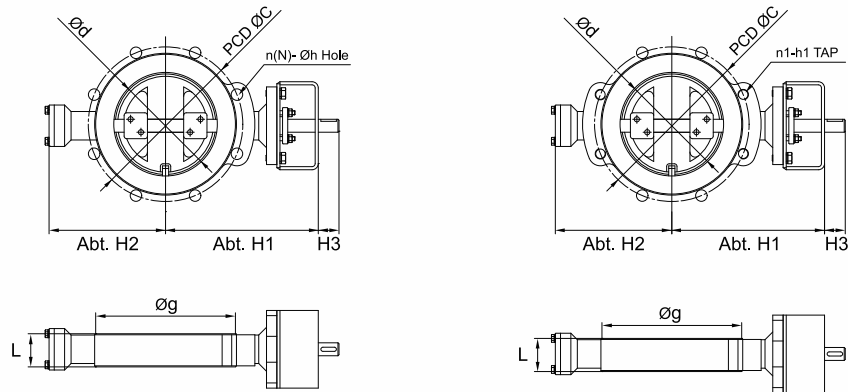
Dimension

Face to Face (L)			Distance		Abt. Weight (kg)			Size (ød)	
Wafer	Lug	Flange	Abt.H1	Abt.H2	Wafer	Lug	Flange	inch	mm
48		114	185	145	10	12	22	3	80
54		127	200	165	15	18	28	4	100
57		140	240	205	25	29	44	6	150
64		152	270	225	36	44	64	8	200
71		165	320	275	56	65	87	10	250
81		178	350	310	68	80	123	12	300
92		190	400	350	93	130	155	14	350
102		216	450	390	121	144	224	16	400
114		222	490	410	144	191	255	18	450
127		229	500	450	160	226	321	20	500
154		267	565	515	284	339	475	24	600
165		292	600	560	325	450	560	26	650
165		292	650	600	388	519	685	28	700
165		318	680	625	475	620	840	30	750
190		318	720	645	607	783	1050	32	800
200		330	805	710	860	1102	1350	36	900
200		410	840	740	950	1280	1550	38	950
216		410	870	770	1180	1450	1720	40	1000
251		410	910	810	1290	1710	1950	42	1050
276		470	1000	900	1661	2170	2450	48	1200

Feature

* FLANGE RATING - ACCORDING TO ASME B16.5 / ASME B16.47 SER'A,B / JIS / USER SPEC. / ETC.
 * FOR "H3" DIMENSION(ACTUTOR) GEAR BOX / CYLINDER / MOTOR / ETC.
 CAN BE APPLIED. PLEASE CONTACT US.

CLASS 300 DOUBLE ECC./TRIPLE ECC. BUTTERFLY VALVE DIMENTION



WAFER DESIGN

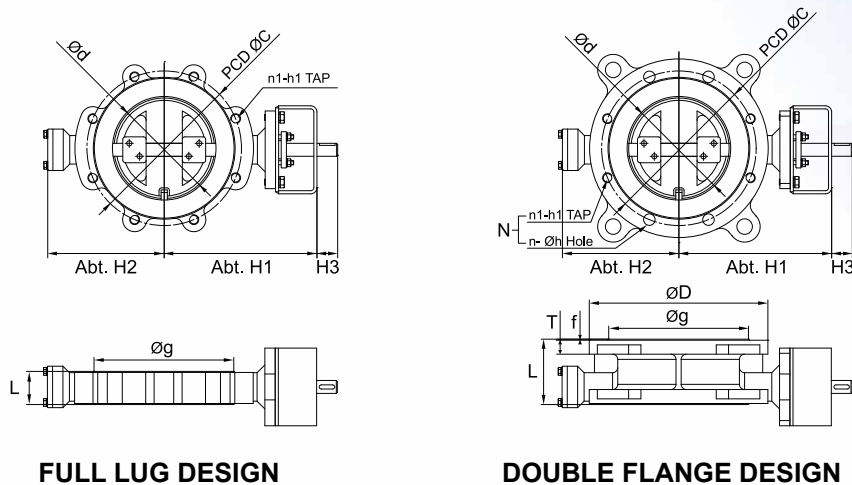
Dimension

Size (ød)		Valve Flange							
mm	inch	øD	øg	PCD øC	N	øh Hole	h1 Tap	T	f
80	3	210	172.0	168.3	8	7/8"	3/4"*10UNC	27.0	2
100	4	255	157.2	200.0	8	7/8"	3/4"*10UNC	30.2	2
150	6	320	215.9	269.9	12	7/8"	3/4"*10UNC	35.0	2
200	8	380	169.9	330.2	12	1"	7/8"*9UNC	39.7	2
250	10	445	323.8	387.4	16	1 1/8"	1"*8UNC	46.1	2
300	12	520	381.0	450.8	16	1 1/4"	1 1/8"*8UNC	49.3	2
350	14	585	412.8	514.4	20	1 1/4"	1 1/8"*8UNC	52.4	2
400	16	650	469.9	571.5	20	1 3/8"	1 1/4"*8UNC	55.6	2
450	18	710	533.4	628.6	24	1 3/8"	1 1/4"*8UNC	58.8	2
500	20	775	584.2	685.8	24	1 3/8"	1 1/4"*8UNC	62.0	2
600	24	915	692.2	812.8	24	1 3/8"	1 1/2"*8UNC	68.3	2
650	26	970	749	876.3	28	1 3/4"	1 5/8"*8UNC	77.8	2
700	28	1035	800	939.8	28	1 3/4"	1 5/8"*8UNC	84.2	2
750	30	1090	857	997.0	28	1 7/8"	1 3/4"*8UNC	90.5	2
800	32	1150	914	1054.1	28	2"	1 7/8"*8UNC	96.9	2
900	36	1270	1022	1168.4	32	2 1/8"	2"*8UNC	103.2	2
950	38	1170	1029	1092.2	32	1 5/8"	1 1/2"*8UNC	106.4	2
1000	40	1240	1086	1157.7	32	1 4/3"	1 5/8"*8UNC	112.8	2
1050	42	1290	1137	1206.5	32	1 4/3"	1 5/8"*8UNC	117.5	2
1200	48	1465	1302	1371.6	32	2"	1 7/8"*8UNC	131.8	2

Feature

* FLANGE RATING - ACCORDING TO ASME B16.5 / ASME B16.47 SER'A,B / JIS / USER SPEC. / ETC.
 * FOR "H3" DIMENSION(ACTUTOR) GEAR BOX / CYLINDER / MOTOR / ETC.
 CAN BE APPLIED. PLEASE CONTACT US.

CLASS 300 DOUBLE ECC./TRIPLE ECC. BUTTERFLY VALVE DIMENTION



FULL LUG DESIGN

DOUBLE FLANGE DESIGN

Dimension

Face to Face (L)			Distance		Abt. Weight (kg)			Size (ød)	
Wafer	Lug	Flange	Abt.H1	Abt.H2	Wafer	Lug	Flange	inch	mm
48		114	190	150	13	15	28	3	80
54		127	210	175	19	23	35	4	100
57		140	260	220	31	36	55	6	150
64		152	290	245	45	55	80	8	200
71		165	340	290	70	81	109	10	250
81		178	370	330	85	100	154	12	300
92		190	425	375	116	163	194	14	350
102		216	480	415	151	180	280	16	400
114		222	520	450	180	239	319	18	450
127		229	550	500	200	283	401	20	500
154		267	640	560	355	424	594	24	600
165		292	660	600	406	563	700	26	650
165		292	750	650	485	649	856	28	700
165		318	730	675	594	775	1050	30	750
190		318	770	700	759	979	1313	32	800
200		330	900	800	1075	1378	1688	36	900
200		410	950	850	1188	1600	1938	38	950
216		410	980	880	1475	1813	2150	40	1000
251		410	1110	930	1613	2138	2438	42	1050
276		470	1200	1000	2076	2713	3063	48	1200

Feature

* FLANGE RATING - ACCORDING TO ASME B16.5 / ASME B16.47 SER'A,B / JIS / USER SPEC. / ETC.
 * FOR "H3" DIMENSION(ACTUTOR) GEAR BOX / CYLINDER / MOTOR / ETC.
 CAN BE APPLIED. PLEASE CONTACT US.

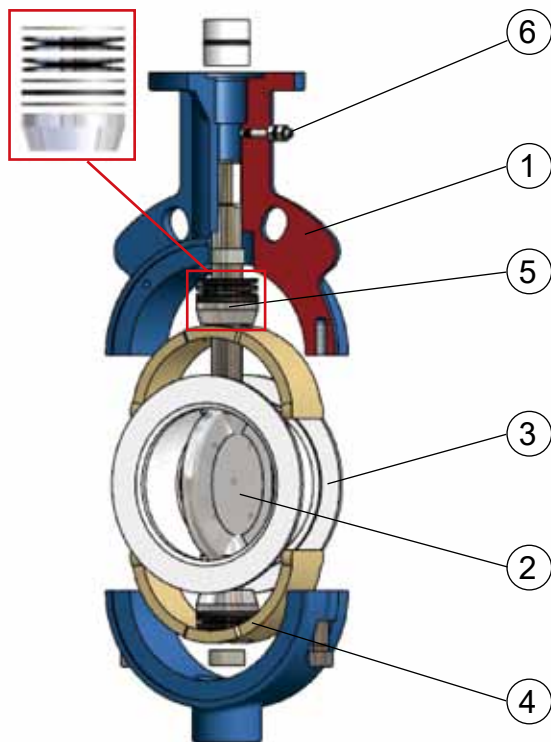
■ ACID PROOF BUTTERFLY VALVE



ChemValve-Schmid Valve Technology



ChemValve-Schmid AG was established in 1993 with the manufacturing company Convey-Schmid AG. It was created by the merger of the sales company Chemvalve-Schmid AG. Currently, we export valves to more than 40 countries around the world, And check valves.



WAFER TYPE



LUG TYPE

■ Standard Material Specification

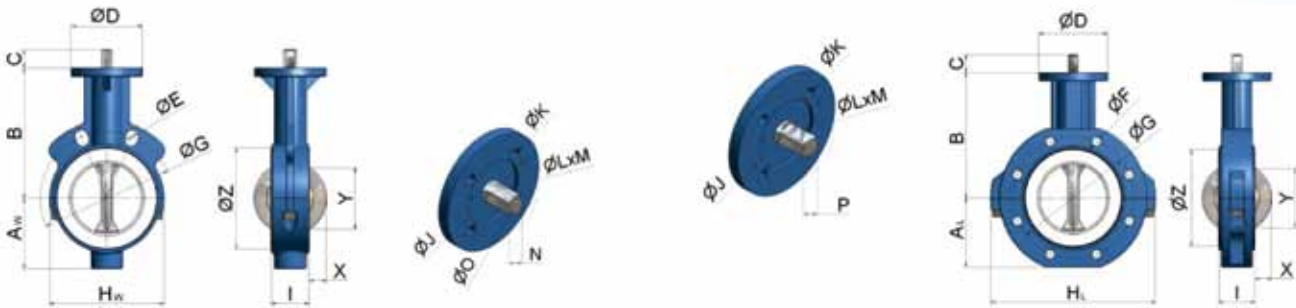
No	Part Name	Material
1	Split Body	FCD
2	Disc / Shaft	S.S / PFA CO.
3	Liner	PTFE / TFM
4	Back-up Ring	Silicon
5	Comp. Bearing / Press. Package	SS-Viton-Spring Steel-POM-PTFE
6	Atex Type	(Option)

ACID PROOF BUTTERFLY VALVE DIMENTION

CODING CHART / MATERIAL

Disc	Liner	Back-up	Body	Body-Type	Standard-Flange
P - PFP	T - TFM(PTFE)	S - Silicone	G - 0.7043(GGG-40.3)	W - Wafer	D1 - DIN PN10
C - PFAC cond.	C - TFM cond.	V - Viton	S - St.Steel	E - Lug	D2 - DIN PN16
S - St. Steel	F - TFM cond. FDA	E - EPDM	C - C-Steel		A1 - ANSI 150lbs
F - Polished ST. Steel	U - UHMPE	F - Viton FDA			J1 - JIS 10K
T - Titanium					AD - AS-2129 Table D
H - Hastelloy C22					AE - AS-2129 Table E
					SA - SANS 1123-1000/3

BARE SHAFT DIMENTION

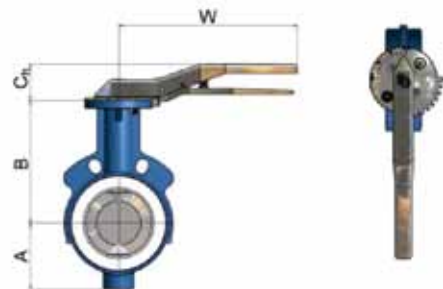


Inch ANSI	A _w	A _L	B	C	øD	øE DIN	øF DIN	ø DIN	øE ANSI	øF ANSI	øG ANSI	H _w	H _L	I	øJ	øK	øLxM	N	øO	P	X	Y	Z	ISO	kg _w	kg _L	DN DIN
1 1/2"	53*	53	94	19	65	4x18	4xM16	110	2x16	4x1/2"-13UNC	98.4	142*	142	33	50	4x7	36x3.5	9	13	See Column N	7	34	76	F05	1.5	2.5	40
2"	56	58	130	19	102	2x18	8xM16	125	2x19	4x5/8"-11UNC	120.6	104	153	43	70	4x9	56x3.5	11	14		6	31	85	F07	3.0	5.0	50
2 1/2"	67	65	146	19	102	2x18	8xM16	145	2x19	4x5/8"-11UNC	139.7	128	173	46	70	4x9	56x3.5	11	14	11	48	106	F07	4.0	7.0	65	
3"	84	88	165	19	102	2x18	8xM16	160	2x19	4x5/8"-11UNC	152.4	144	210	46	70	4x9	56x3.5	11	14	17	63	122	F07	5.0	8.1	80	
4"	100	102	185	25	102	2x18	8xM16	180	2x19	8x5/8"-11UNC	190.5	164	245	52	70	4x9	56x3.5	14	18	27	90	146	F07	6.3	10.8	100	
5"	110	116	202	25	102	2x18	8xM16	210	2x22	8x3/4"-10UNC	215.9	194	272	56	70	4x9	56x3.5	14	18	38	118	166	F07	7.7	14.5	125	
6"	125	127	217	30	102	2x22	8xM20	240	2x22	8x3/4"-10UNC	241.3	220	295	56	70	4x9	56x3.5	14	18	47	137	193	F07	10.0	15.8	150	
8"	158	160	245	26	152	2x22	8xM20	295	2x22	8x3/4"-10UNC	298.4	274	364	60	102	4x11	71x3.5	24	19	71	189	251	F10	16.5	24.6	200	
10"	190	193	270	30	152	2x22	12xM20	350	2x26	12x7/8"-9UNC	361.9	330	431	68	102	4x11	71x3.5	28	22	92	239	301	F10	24.5	33.3	250	
12"	225	227	308	30	152	2x22	12xM20	400	2x26	12x7/8"-9UNC	431.8	380	511	78	102	4x11	71x3.5	28	22	112	290	349	F10	37.0	57	300	
14"	256*	256	330	37	152	16x22	16xM20	460	12x29	12x1"-8UNC	476.2	571*	571	92	125	4x13	87x3.5	35	27	125	328	414	F12	87*	87	350	
16"	292*	292	365	37	152	16x26	20xM24	515	16x29	16x1"-8UNC	539.7	643*	643	102	125	4x13	87x3.5	35	27	146	377	460	F12	107*	107	400	
18"	311*	311	400	50	175	20x26	20xM24	565	16x32	16x1 1/8"-7UNC	577.8	684*	684	114	140	4x17	102x4.5	47	36	164	417	515	F14	152*	152	450	
20"	340*	340	435	50	175	20x26	20xM24	620	20x32	20x1 1/8"-7UNC	635.0	745*	745	127	140	4x17	102x4.5	47	36	184	477	570	F14	185*	185	500	
24"	398*	398	510	64	210	20x30	20xM27	725	20x35	20x1 1/4"-7UNC	749.3	863*	863	154	165	4x21	132x5.5	58	46	215	560	672	F16	254*	254	600	
30"	482*	482	608	90	210				28x35	28x1 1/4"-7UNC	914.4	1040*	1040	154	165	4x21	132x5.5	**	70	**	289	716	851	F16	300*	300	900
36"	573*	573	684	90	300	28x33	28xM30	1050	32x42	32x1 1/2"-6UNC	1085.8	1232*	1232	154	254	8x17	202x5.5	**	70	**	360	860	1016	F25	460*	460	900
42"	660*	660	768	90	300				36x42	36x1 1/2"-6UNC	1257.3	1402	1402	154	254	8x17	202x5.5	**	80	**	434	1009	1170	F25	500*	500	900

LEVER / WORM GEAR BOX DIMENTION

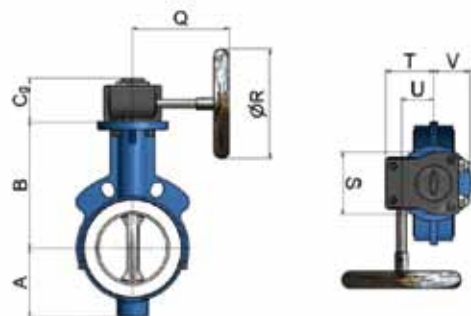
Hand Lever

Inch	C _h	W	Kg	DN
1 1/2"	46	230	0.8	40
2"-3"	46	230	0.8	50 - 80
4"-5"	55	270	1.1	100 - 125
6"	55	325	1.4	150
8"	55	349	1.9	200
10"-12"	55	349	1.9	250 - 300



Gear Box

Inch	C _g	Q	R	S	T	U	V	kg	DN
2"-3"	64	138	125	84	67.5	43.5	45.7	2.0	50-80
4"-5"	64	144	160	84	67.5	43.5	45.7	2.0	100-125
6"	75	201	160	112	81.5	52.5	55	3.9	150
8"	75	203	200	112	81.5	52.5	55	3.9	200
10"	75	203	200	112	81.5	52.5	55	3.9	250
12"	91	261	250	135	115	68.8	72.5	7.7	300
14"-16"	91	266	315	135	115	68.8	72.5	7.7	350-400
18"-20"	87	204	315	138	105	71	93	9.0	450-500
24"	90	227	315	200	126	86	101	14.5	600



■ BALL VALVE

■ CONSTRUCTION TO API 6D

Our JW CONTROL.(JWC) Ball valves have been design fully in accordance with the requirements of API 6D.

■ FULL AND REDUCERD BORE

The valves are manufactured in sizes ranging from 3/8"(10mm) throught 2"(50mm) and pressure rating an ANSI, JIS 150 and 600LB for both the full bore and reduced bore version. The end are threaded NPT or socket weld.

■ FLOATING BALL

The floating ball in pressed against the seat by the pressure the medium in the line. The greater is the pressure the tighter is the contact. Pressure and temperatures allowable by each type on the graph pressure temperature limits.

■ FIRE SAFETY

API 607 is internationally recognized as the official standards for defining fire safe testing procedure and evaluation. The fire safe characteristic of our valve has been proved with many test on proto types and finally certified according to API 607.

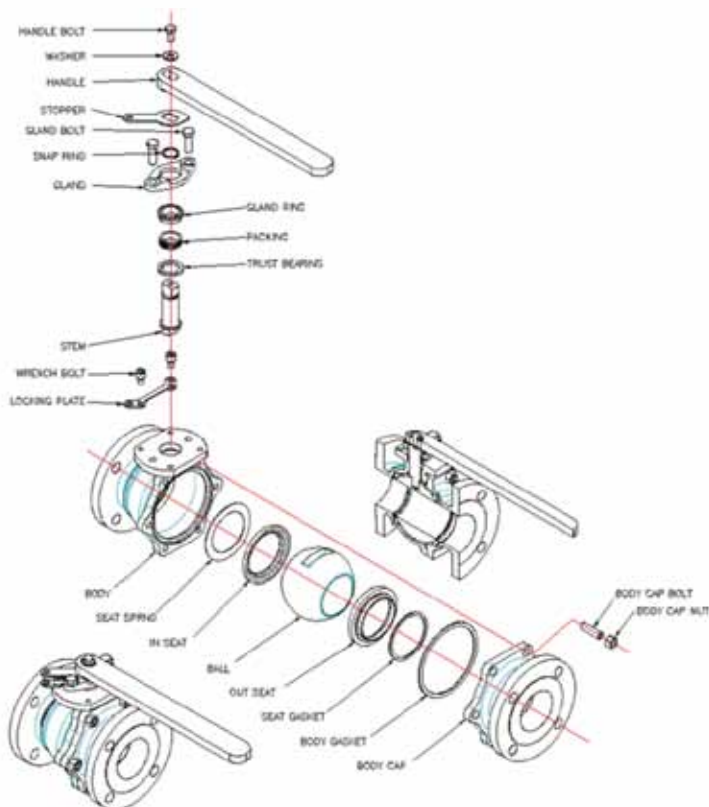
■ ANTI-STATIC DEVICE

if the fluid handled by the valve is flammable, the valve must be provided with an anti-static device which achieves electrical continuity between the ball stem and the valve body.

■ TESTING TO API 598

The hydro tests for seat sealing and body sealing are carried out respectively at 100% and 150% of the rated cold working pressure. The hydro tests seat pressure shall not exceed the seat rating.

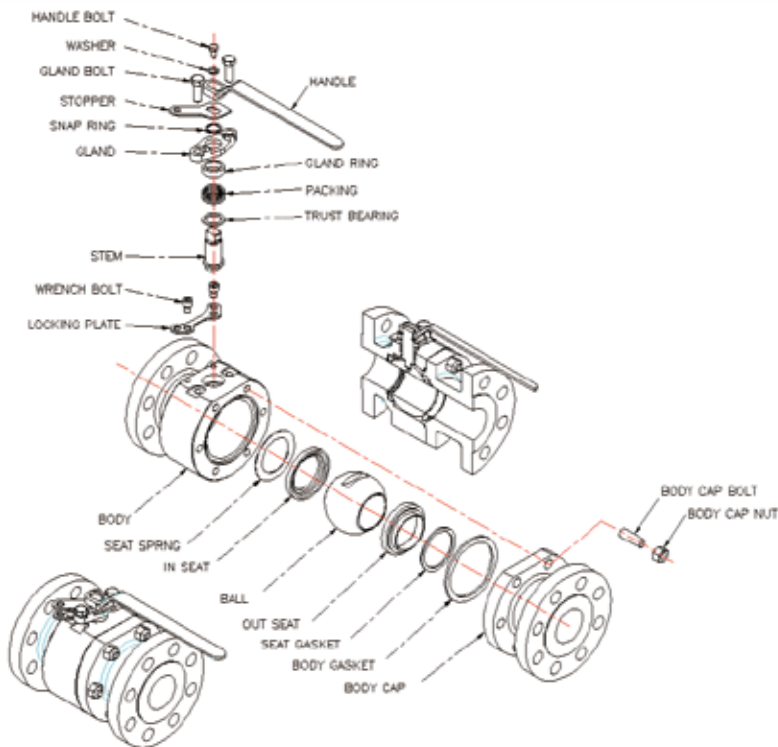
■ CASTING BALL VALVE



No	Part Name	Material
1	Body	SCS13
2	Body Cap	SCS13
3	Ball	A351-CF8M+TCC
4	Stem	SUS304
5	In-Seat	SUS304+TCC
6	Out-Seat	SUS304+TCC
7	Seat Spring	Inconel X750
8	Seat Gasket	Graphite
9	Body Gasket	SUS316+GRP
10	Trust Bearing	PEEK
11	Cap Stud. Bolt	B7
12	Cap Hex. Nut	2H
13	Packing	Graphite
14	Gland Ring	A276-316L
15	Gland	A276-304
16	Snap Ring	
17	Stopper	SUS304
18	Locking Plate	SUS304
19	Wrench Bolt	SCM440
20	Gland Bolt	B7
21	Washer	SUS304
22	Handle Bolt	SUS304
23	Handle	A36

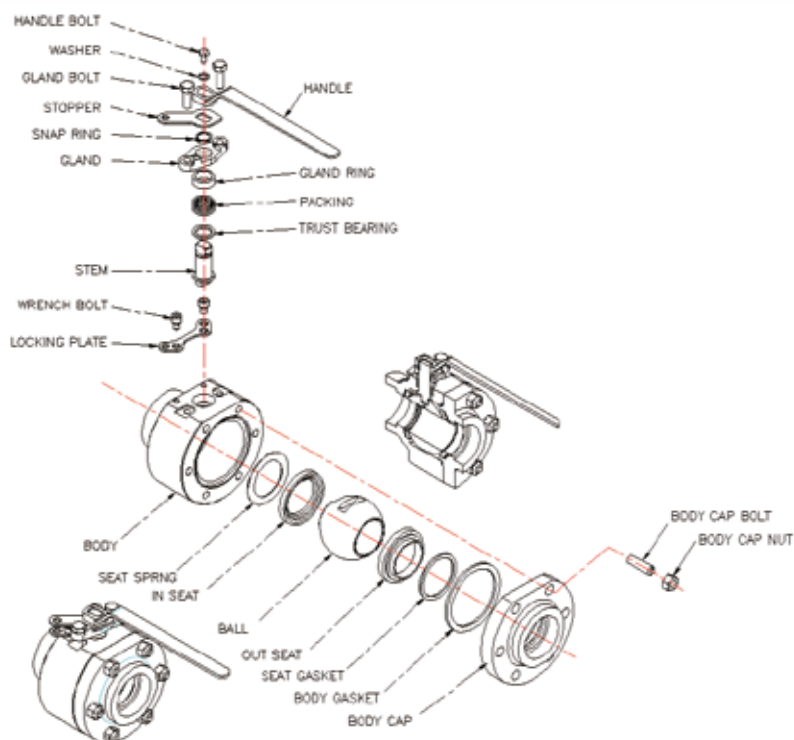
■ BALL VALVE

■ FORGED BALL VALVE (Flange Type)



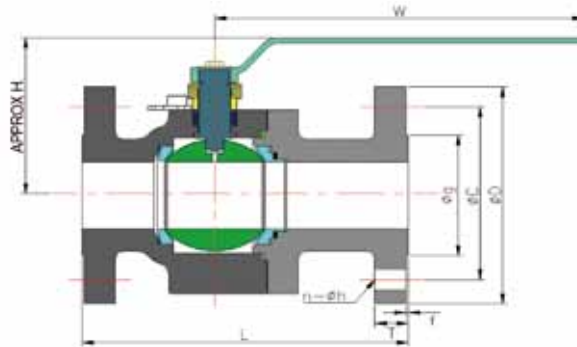
No	Part Name	Material
1	Body	A105N
2	Body Cap	A105N
3	Ball	SUS316+TCC
4	Stem	SUS316
5	In-Seat	SUS316+TC
6	Out-Seat	SUS316+TC
7	Seat Spring	Inconel X750
8	Seat Gasket	Graphite
9	Body Gasket	SUS316L+GRP
10	Trust Bearing	Brass
11	Cap Stud. Bolt	B7
12	Cap Hex. Nut	2H
13	Packing	Graphite
14	Gland Ring	A276-316
15	Gland	A276-304
16	Snap Ring	
17	Stopper	SUS304
18	Locking Plate	SUS304
19	Wrench Bolt	SCM440
20	Gland Bolt	B7
21	Washer	SUS304
22	Handle Bolt	SUS304
23	Handle	A36

■ FORGED BALL VALVE (Socket Weld & Thread Type)



No	Part Name	Material
1	Body	A105N
2	Body Cap	A105N
3	Ball	SUS316+TCC
4	Stem	SUS316
5	In-Seat	SUS316+TC
6	Out-Seat	SUS316+TC
7	Seat Spring	Inconel X750
8	Seat Gasket	Graphite
9	Body Gasket	SUS316L+GRP
10	Trust Bearing	Brass
11	Cap Stud. Bolt	B7
12	Cap Hex. Nut	2H
13	Packing	Graphite
14	Gland Ring	A276-316
15	Gland	A276-304
16	Snap Ring	
17	Stopper	SUS304
18	Locking Plate	SUS304
19	Wrench Bolt	SCM440
20	Gland Bolt	B7
21	Washer	SUS304
22	Handle Bolt	SUS304
23	Handle	A36

FORGED BALL VALVE (FLANGE TYPE) DIMENTION



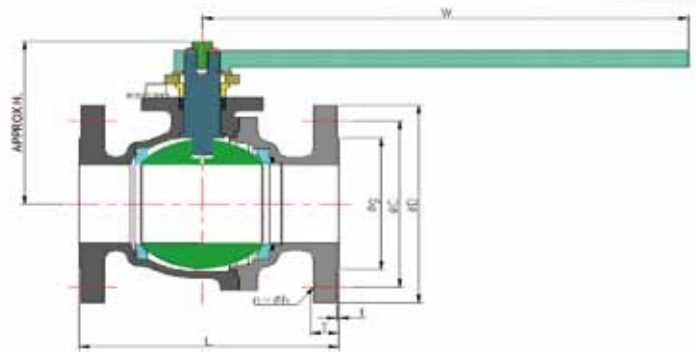
Dimension (JIS)

Pressure Rating	Valve Size		L	øD	øC	øg	T	f	H	W	h	No. of Bolts	
	DN	Inch										No.	Diam.
10Kg/cm ²	10	3/8		90	65	48	12	1			15	4	M12
	15	1/2	108	95	70	51	12	1	67	145	15	4	M12
	20	3/4	117	100	75	56	14	1	72	145	15	4	M12
	25	1	127	125	90	67	14	1	80	185	19	4	M16
	32	1 1/4	140	135	100	76	16	2	95	185	19	4	M16
	40	1 1/2	165	140	105	81	16	2	105	245	19	4	M16
20Kg/cm ²	50	2	178	155	120	96	16	2	118	245	19	4	M16
	10	3/8		90	65	48	14	1			15	4	M12
	15	1/2	140	95	70	51	14	1	70	145	15	4	M12
	20	3/4	152	100	75	56	16	1	80	145	15	4	M12
	25	1	165	125	90	67	16	1	80	185	19	4	M16
	32	1 1/4	178	135	100	76	18	2	100	185	19	4	M16
	40	1 1/2	190	140	105	81	18	2	115	245	19	4	M16
50	2	216	155	120	96	18	2	120	245	19	8	M16	

Dimension(ANSI)

Class 150	1/2	108	89	60.5	35	11.2	1.6	67	145	16	4	1/2
	3/4	117	98	70.0	43	12.7(11.2)	1.6	72	145	16	4	1/2
	1	127	108	79.5	51	14.3(11.2)	1.6	80	185	16	4	1/2
	1 1/4	140	117	89.0	64	15.9(12.7)	1.6	95	185	16	4	1/2
	1 1/2	165	127	98.5	73	17.5(14.3)	1.6	105	245	16	4	1/2
	2	178	152	120.5	92	19.1(15.9)	1.6	118	245	19	4	5/8
Class 300	1/2	140	95	66.5	35	14.3	1.6	70	145	16	4	1/2
	3/4	152	117	82.5	43	15.9	1.6	80	145	19	4	5/8
	1	165	124	89.0	51	17.5	1.6	80	185	19	4	5/8
	1 1/4	178	133	98.5	64	19.1	1.6	100	185	19	4	5/8
	1 1/2	190	156	114.5	73	20.7	1.6	115	245	22	4	3/4
	2	216	165	127.0	92	22.3	1.6	120	245	19	8	5/8
Class 600	1/2		95	66.5	35	14.3	6.4			16	4	1/2
	3/4		117	82.5	43	15.9	6.4			19	4	5/8
	1		124	89.0	51	17.5	6.4			19	4	5/8
	1 1/4		133	98.5	64	20.7	6.4			19	4	5/8
	1 1/2		156	114.5	73	22.3	6.4			22	4	5/8
	2		165	127.0	92	25.4	6.4			19	8	5/8

FORGED BALL VALVE (FLANGE TYPE) DIMENTION



Dimension(JIS)

Pressure Rating	Valve Size		L	øD	øC	øg	T	f	H	W	h	No. of Bolts	
	DN	Inch										No.	Diam.
10Kg/cm ²	10	3/8		90	65	48	12	1			15	4	M12
	15	1/2	108	95	70	51	12	1	67	145	15	4	M12
	20	3/4	117	100	75	56	14	1	72	145	15	4	M12
	25	1	127	125	90	67	14	1	80	185	19	4	M16
	32	1 1/4	140	135	100	76	16	2	95	185	19	4	M16
	40	1 1/2	165	140	105	81	16	2	105	245	19	4	M16
	50	2	178	155	120	96	16	2	118	245	19	4	M16
20Kg/cm ²	10	3/8		90	65	48	14	1			15	4	M12
	15	1/2	140	95	70	51	14	1	70	145	15	4	M12
	20	3/4	152	100	75	56	16	1	80	145	15	4	M12
	25	1	165	125	90	67	16	1	80	185	19	4	M16
	32	1 1/4	178	135	100	76	18	2	100	185	19	4	M16
	40	1 1/2	190	140	105	81	18	2	115	245	19	4	M16
	50	2	216	155	120	96	18	2	120	245	19	8	M16

Dimension(ANSI)

Class 150	1/2	108	89	60.5	35	11.2	1.6	67	145	16	4	1/2
	3/4	117	98	70.0	43	12.7(11.2)	1.6	72	145	16	4	1/2
	1	127	108	79.5	51	14.3(11.2)	1.6	80	185	16	4	1/2
	1 1/4	140	117	89.0	64	15.9(12.7)	1.6	95	185	16	4	1/2
	1 1/2	165	127	98.5	73	17.5(14.3)	1.6	105	245	16	4	1/2
	2	178	152	120.5	92	19.1(15.9)	1.6	118	245	19	4	5/8
Class 300	1/2	140	95	66.5	35	14.3	1.6	70	145	16	4	1/2
	3/4	152	117	82.5	43	15.9	1.6	80	145	19	4	5/8
	1	165	124	89.0	51	17.5	1.6	80	185	19	4	5/8
	1 1/4	178	133	98.5	64	19.1	1.6	100	185	19	4	5/8
	1 1/2	190	156	114.5	73	20.7	1.6	115	245	22	4	3/4
	2	216	165	127.0	92	22.3	1.6	120	245	19	8	5/8
Class 600	1/2		95	66.5	35	14.3	6.4			16	4	1/2
	3/4		117	82.5	43	15.9	6.4			19	4	5/8
	1		124	89.0	51	17.5	6.4			19	4	5/8
	1 1/4		133	98.5	64	20.7	6.4			19	4	5/8
	1 1/2		156	114.5	73	22.3	6.4			22	4	5/8
	2		165	127.0	92	25.4	6.4			19	8	5/8

■ CON./DOUBLE ECC./TRIPLE ECC. BUTTERFLY VALVE MODEL



■ BUTTERFLY CONCENTRIC TYPE

SIZE : 2"~48" (50A~1200A) / ETC.
FLANGE RATING : 10K / CL.150 / ETC.
FACE TO FACE : API 609 / ETC.
SEAT MATERIAL : RUBBER / ETC.



■ BUTTERFLY DOUBLE ECCENTRIC TYPE

SIZE : 3"~48" (50A~1200A) / ETC.
FLANGE RATING : 10K / CL.150 / ETC.
FACE TO FACE : API 609 / ASME B16.10 / ETC.
SEAT MATERIAL : RUBBER / TEFLON / ETC.



■ BUTTERFLY TRIPLE ECCENTRIC TYPE

SIZE : 3"~48" (50A~1200A) / ETC.
FLANGE RATING : 10K / CL.150 / ETC.
FACE TO FACE : API 609 / ISO 5752 / ETC.
SEAT MATERIAL : METAL / ETC.



■ BUTTERFLY TYPE DAMPER

SIZE : 3"~48" (50A~1200A) / ETC.
FLANGE RATING : 10K / CL.150 / ETC.
FACE TO FACE : API 609 / ISO 5752 / ETC.
SEAT MATERIAL : METAL / ETC.

■ ET CETERA VALVE MODEL



■ BALL VALVE FLOATING TYPE



■ BALL VALVE TRUNNION TYPE



■ GATE VALVE WEDGE TYPE



■ GATE VALVE KNIFE TYPE



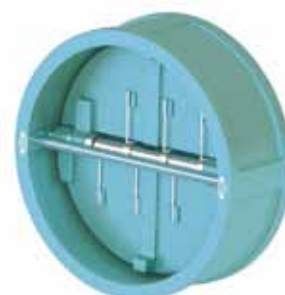
■ GLOBE VALVE PLUG TYPE



■ CHECK VALVE SWING TYPE



■ CHECK VALVE SINGLE PLATE TYPE



■ CHECK VALVE DUAL PLATE TYPE

ASSEMBLY & PRODUCTS



BWTS VITERLEF PROJECT (SAMGONG VOS) --CONTROL V/V



ULSAN YOUNG NAM CCPP CWP PJT) -ECCENTRIC BFV (R/B TYPE)



POSCO FINEX CWP H/P BFV 900A



POSCO POHANG CCPP - SHUT/OFF VALVE (PNEUMATIC ACT)



POSCO POHANG CCPP GAS LINE #1500A & ETC SUPPLIED



SK GAS - SK PDH PJT SHUT/OFF VALVE (TRIPLE OFFSET BFV-12")



POSCO FINEX LOUVER DAMPER



GS E&C - BASF Yeosu - Extension Ultrason PJT (30",LUG TYPE)

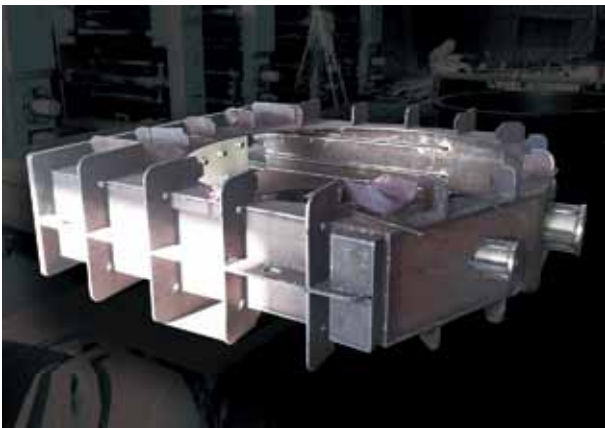
ASSEMBLY & PRODUCTS



HYOSUNG VIETNAM HANKOOK TIRE PJT (HIGH TEMP` BFV - 300°C)



BWTS VITERLEF PROJECT (SAMGONG VOS)-SHOT/OFF BALL



WELDING TYPE GATE 2000A to POSCO #2 BFG GAS PJT



WELDING TYPE GATE 2000A to POSCO #2 BFG GAS PJT



WELDING TYPE GATE 2000A to POSCO #2 BFG GAS PJT



JWC WELDING AREA (automatic welding machine & etc)



JW CONTROL CO.

Valve & Plant Equipment, Service

Address : 55 Mieumsandan 3-ro, Gangseo-gu, Busan, Republic of Korea

TEL : +82 - 051 - 831 - 3982 / FAX : +82 - 051 - 831 - 3983

E-Mail : amanuma@daum.net / sales@jwcvalve.com

www.jwcvalve.com